

The background of the slide is a landscape photograph. The top portion shows a range of green, rocky mountains under a blue sky with scattered white clouds. Below the mountains is a wide, calm body of water that reflects the sky and the mountains. The water's surface is a mix of light blue and green, with subtle ripples. The overall scene is serene and natural.

CORPORATE INFORMATION OVERVIEW

June, 2010

Disclaimer

This presentation includes certain statements and other information that may be deemed "forward-looking". Other than statements of historical fact all statements in this presentation that address future production, reserve or resource potential, exploration drilling, exploitation activities and events or developments that the Company expects are forward-looking statements. Although the Company believes the expectations expressed in such forward-looking statements are based on reasonable assumptions, such statements are not guarantees of future performance and actual results or developments may differ materially from those in the forward-looking statements. Factors that could cause actual results to differ materially from those in forward-looking statements include market prices, exploitation and exploration successes, availability of capital and financing, and general economic, market or business conditions. Investors are cautioned that any such statements are not guarantees of future performance and that actual results or developments may differ materially from those projected in the forward-looking statements. For more information on Diamcor, Investors should review Diamcor's annual report and the Company's home jurisdiction filings that are available at www.sedar.com.

Diamcor Overview



- **Focused on Production & Cash Flow**
- **First De Beers Acquisition in Final Stages**
- **Initial NI43-101 – 54M Tons & 1.3M Carats**
- **Shortages of Rough Diamonds Imminent**
- **Additional Acquisition Discussions Ongoing**
- **Targeting 500,000 cts/yr within 24-36 months**

Proven Experience

So Ver Tailings



Project Development



Production



- **Extensive 24/7 Operational Experience**
- **Kimberlite, Alluvial & Tailings Processing Experience**
- **Operating Margins Approaching 50%**
- **Strong Relationships with Majors (De Beers)**
- **Understanding of Government Policies & Permitting**
- **Affiliation with High Profile B E E groups (Nozala)**

De Beers
Krone-Endora Project Acquisition
(Targeted Closing Q2 – 2010)

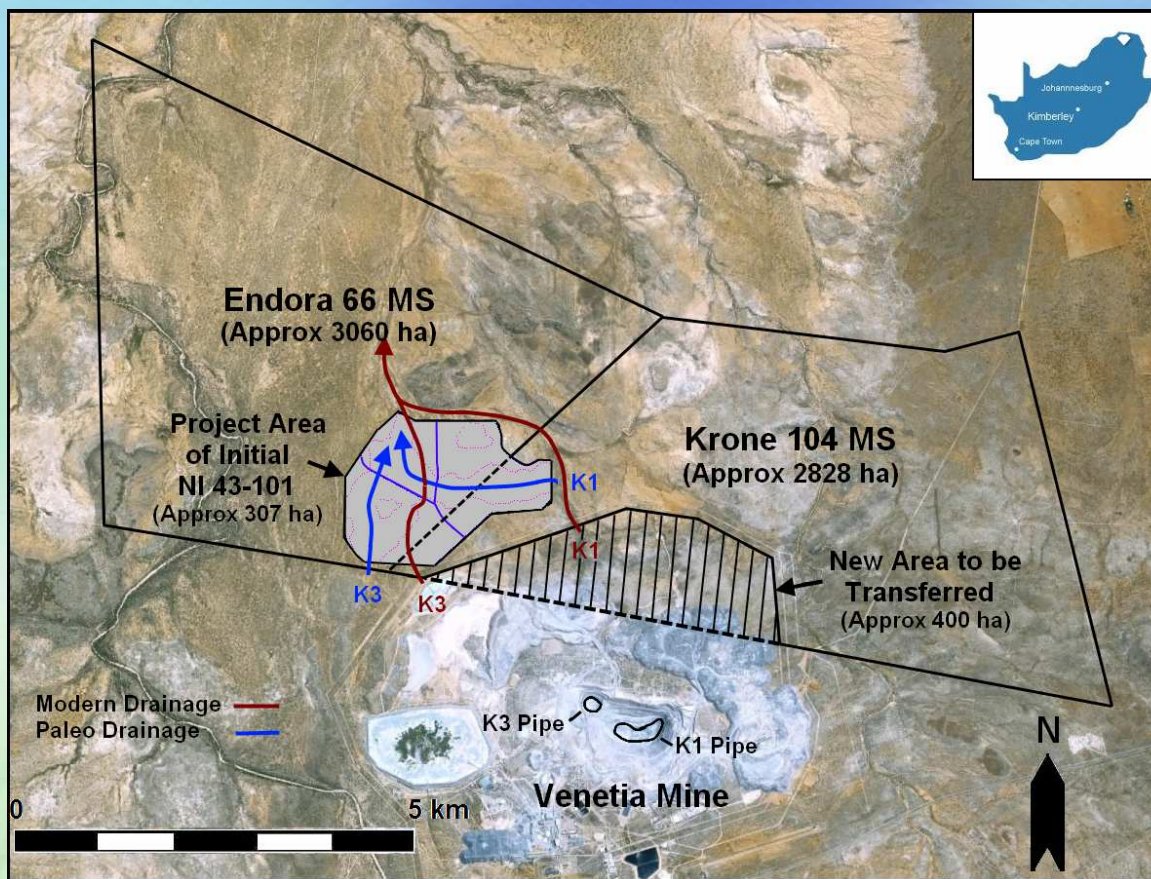
Production / Cash Flow / Growth

De Beers Krone-Endora Highlights

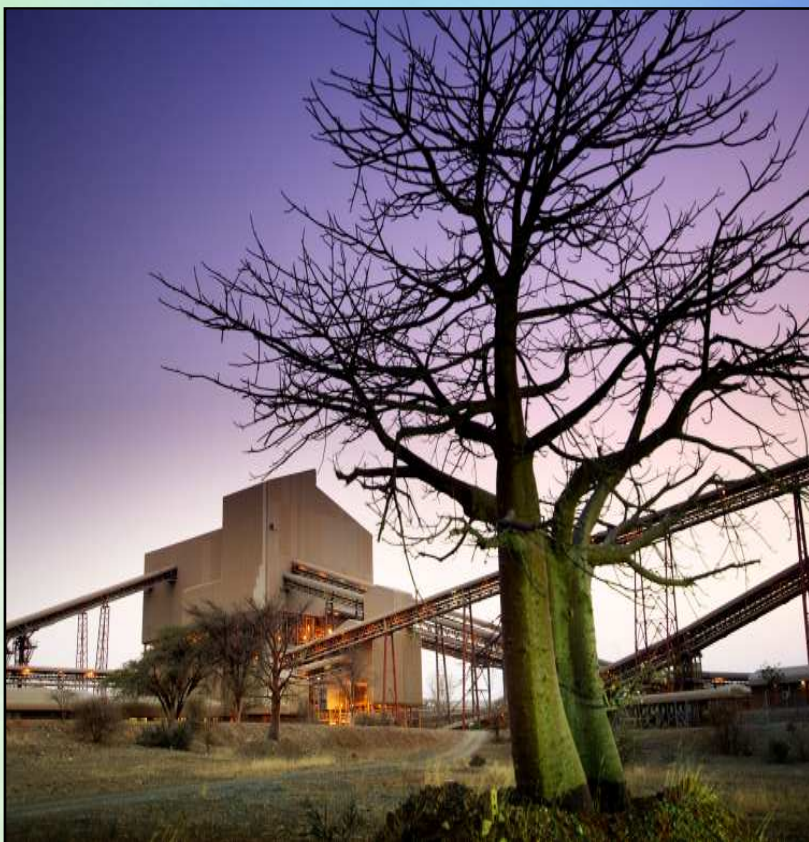


- Directly Adjacent to Venetia Diamond Mine
- Rare “Eluvial” & Alluvial Deposit from Venetia
- Est. Shift of 1,000 Vertical Meters of Material
- Low-Cost Strip-Mining Operation
- Potential for Production Life of 15 years
- Targeting Production Start Q3 - 2010
- Revised NI 43-101 Estimate – Q1 of 2011

Krone-Endora - Desirable Location

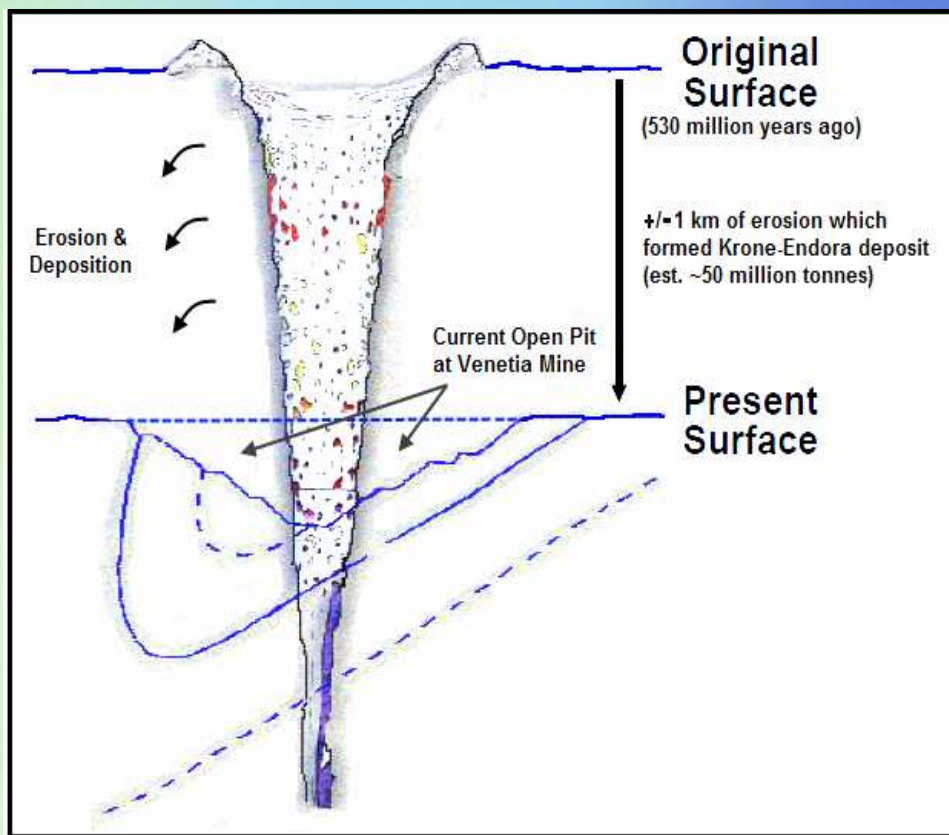


Venetia Facts



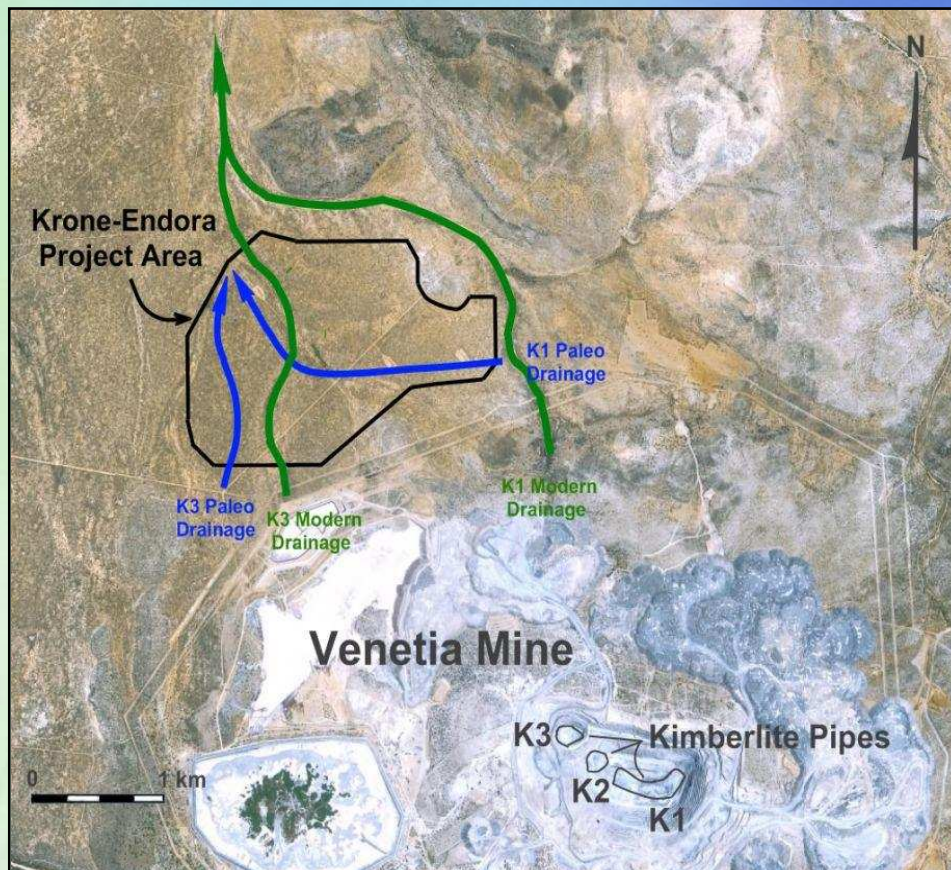
- 3rd Largest Diamond Mine in the World
- Directly related to Krone-Endora
- Est. 50% of S.A.'s Yearly Production
- 2007 - 9.0 M cts/yr – 750K cts/mo.
- Est. 85% reported “gem quality”
- Est. 40% of World's Gem Quality Diamonds
- Venetia's Largest Diamond – 315+ carats

Krone–Endora Deposit Origin



- Est. +/- 1,000 Meters Shifted & Eroded Off Venetia onto the Lower Areas of Krone & Endora
- Rare “Eluvial” & Alluvial Deposit
- Higher Grades & Consistency
- Origin Known to be Venetia
- Similar Diamond Size, Frequency, and Qualities are Expected

Krone-Endora Deposit Knowledge



- Extensive Previous Exploration Work By De Beers Provides Knowledge of Deposit
- Extensive Drilling and Bulk Sampling Complete With High-Grade Areas Identified
- Provides Company With the Ability to Immediately Move into Recommended Trial-Mining on Known Areas

LATE STAGE OPPORTUNITY – PRODUCTION - GROWTH

| | | | | | | | | | | | | |
|---|------------|------------|------------|------------|------------|------------|------------|------------|------------|------------|------------|------------|
| Anticipated Start of Trial Mining & Project | | | | | | | | | | | | ✓ |
| Anticipated Closing of Acquisition | | | | | | | | | | | ✓ | |
| Anticipated DME Granting of Section 11 Transfer | | | | | | | | | | | ✓ | |
| Anticipated Finalization of Water Supply / Source | | | | | | | | | | | ✓ | |
| Anticipated Submission of Section 11 Transfer | | | | | | | | | | ✓ | | |
| Access Agreement with De Beers Finalized | | | | | | | | | ✓ | | ✓N | |
| NI43-101 Approved & Released (1.3M Carats) | | | | | | | | ✓ | | | | |
| Permit Renewals Granted and Approved | | | | | | | | ✓ | | | | |
| Drilling & Establishing Water Supply / Source | | | | | | | | ✓ | | | | |
| NI43-101 Work Begins for Approval | | | | | | | | ✓ | | | | |
| License Agreement with DeBeers Finalized | | | | | | | | ✓ | | | | |
| Regulatory Work Begins on Acquisition | | | | | | ✓ | | | | | | |
| Definitive Agreement Signed | | | | | ✓ | | | | | | | |
| Legal Work Begins for Acquisiton | | | | ✓ | | | | | | | | |
| Successful in Bid for Krone-Endora | | | ✓ | | | | | | | | | |
| Partnership with Major BEE Announced | | ✓ | | | | | | | | | | |
| De Beers Discussions Begin | ✓ | | | | | | | | | | | |
| | Q4 2007 | Q1 2008 | Q2 2008 | Q3 2008 | Q4 2008 | Q1 2009 | Q2 2009 | Q3 2009 | Q4 2009 | Q1 2010 | Q2 2010 | Q3 2010 |

Krone-Endora Project Plans



- **NI 43-101 Report Calls for a Low-Cost Drilling Program in Conjunction with a Move to Immediate Trial Mining**
- **Trial Mining to Begin on Known High-Grade Areas with Staged Production Increases**
- **Drilling Program Aimed at Identifying High-Grade Trap-Sites & Additional Resources**
- **Drilling and Trial Mining Will Provide Basis for Planned Increase to Full Scale Mining**

Diamond Market

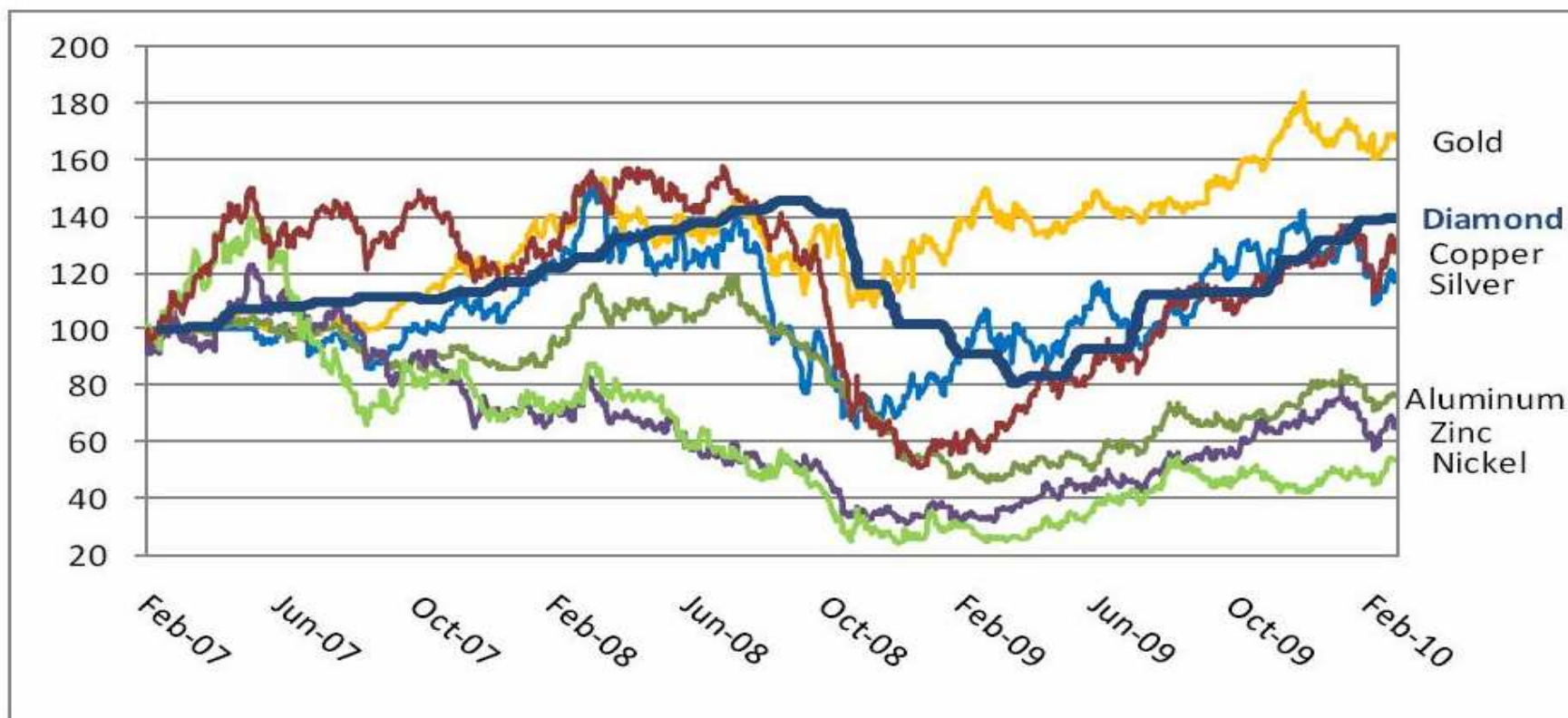
Supply / Demand / Opportunity

Global Diamond Market



- Increasing Rough Prices over Past 6 Years
- Prices Now Exceed Pre-Crisis Highs of 2008
- Emerging Market Demands Growing Rapidly
- No New Deposits Found in Years (5-7 yrs to production)
- Future Shortfall Projected into Billions (US)
- Production Based Companies Positioned Well

Mineral Price Performance



Indexed on S&P/Goldman Sachs spot metal prices and Harry Winston rough sales indexed to shipment 01/07

SHORT-TERM CORPORATE STRATEGY



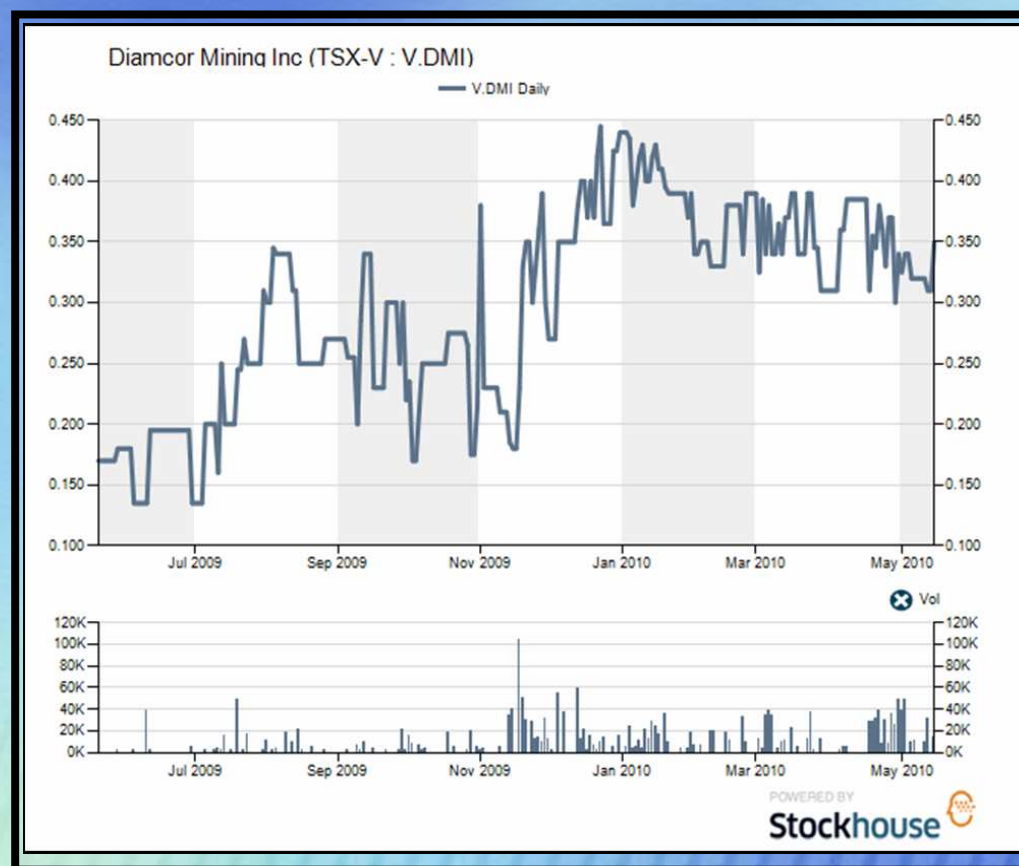
- De Beers Acquisition - Closing Targeted for Q2-2010
- Trial Mining & Drilling Targeted 90-days Post Closing
- Trial Mining Diamonds to Provide Cash Flow
- Project Production Target of +/- 15,000 cts/mo
- Drilling to Support Revised NI43-101 by Q1-2011
- Additional Production Acquisition Discussions Ongoing
- Total Production Target - 500,000 cts/yr - 24 to 36 Mo.

Share Structure Overview

- **TSX-Venture Symbol** - **V.DMI**
- **Issued and outstanding** - **25,618,283**
- **Warrants** - **9,304,942**
- **Options** - **767,500**
- **Fully diluted** - **35,690,725**
- **Market Capitalization** - **~\$8.97 Mil**
- **Available from dilutives*** - **\$5,083,121**
- **Share price*** - **C\$0.35**

* as at May 16, 2010

* Assumes exercise of all Options & Warrants



WHY DIAMCOR - SUMMARY



- One of Few Production Based Canadian Diamond Co's
- Diamond Supply Clearly Under Significant Pressure
- Near-Term Closing of Significant Production Asset
- Drilling To Support Updated NI43-101 (Q1-2011 Target)
- Additional Production Acquisition Discussions Ongoing
- Production Target of 500,000 cts/yr - 24 to 36 Months.
- Excellent Share Structure – Significant Growth Potential
- Late Stage Opportunity – With Early Stage Valuation

Contact Information



DEAN H. TAYLOR - President / CEO

Diamcor Mining Inc.

Suite 630 – 1620 Dickson Ave.

Kelowna, BC Canada

V1Y 9Y2

Tel: (250) 862-3212

Cell: (250) 864-3326

Fax: (250) 862-3214

Email: info@diamcormining.com

Website: www.diamcormining.com